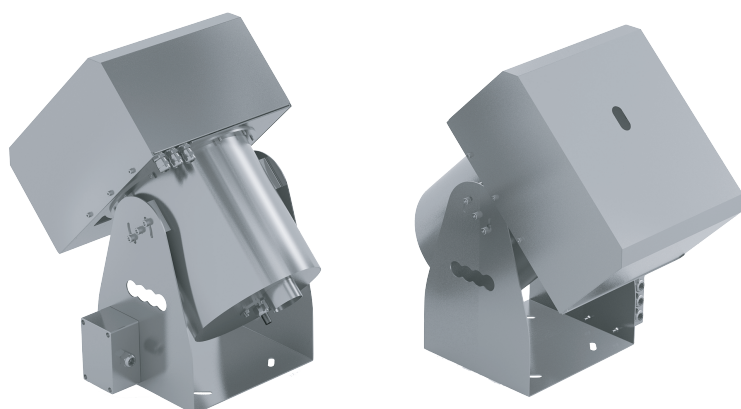
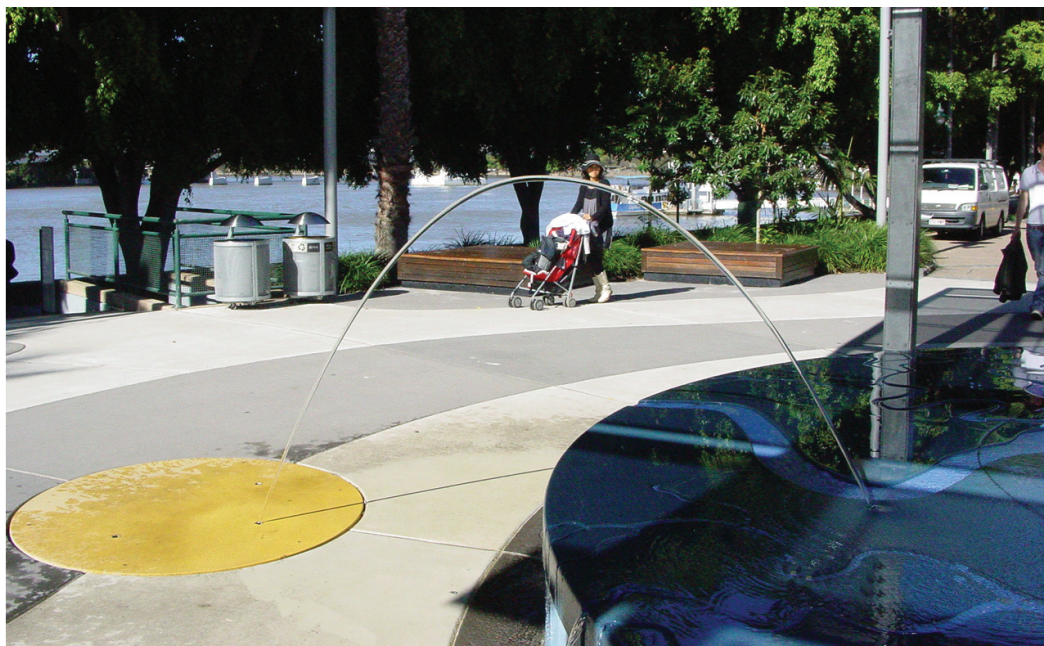


# TWD - Laminar 18mm Comet Jet



WIND RESISTANCE	<div><div></div><div></div><div></div><div></div><div></div></div>
SPLASH	<div><div></div><div></div><div></div><div></div><div></div></div>
NOISE LEVEL	<div><div></div><div></div><div></div><div></div><div></div></div>
VISIBILITY	<div><div></div><div></div><div></div><div></div><div></div></div>
WATER APPEARANCE	CLEAR

**TWD Laminar 18mm Comet Jet** set is the perfect application of the principles of laminar flow in fluid dynamics to create an attractive water feature. It is essentially a special type of fountain that emits a trajectory projectile jet of laminar water that appears to be a jumping tube, so steady that the water stream resembles a fibre optic and can chop the laminar stream into arcs, creating playful, dancing water play. Many refer it as jumping jet or leaping jet. The nozzle emits water jets based on a program, meaning that the behaviour of the jet can be edited to your requirements. Multiple water jets can be timed together to give the impression that the water is capering and jumping from one portion of your water play area to another. Seeing this special water effect closely is an astonishing experience both day and night the possibility and flexibility of using it in both dry and wet application and even totally submerge condition.

Each **TWD Laminar 18mm Comet Jet** emits a laminar water jet of 18mm diameter and is equipped with a low voltage cutting mechanism and an amazing RGB or RGBW luminaire with exceptionally vivid colours to uniformly illuminate the water stream internally in its entire projectile using DMX512 protocol.



Design Studio & Workshop • Unit 4, 33 Jade Drive Molendinar 4214

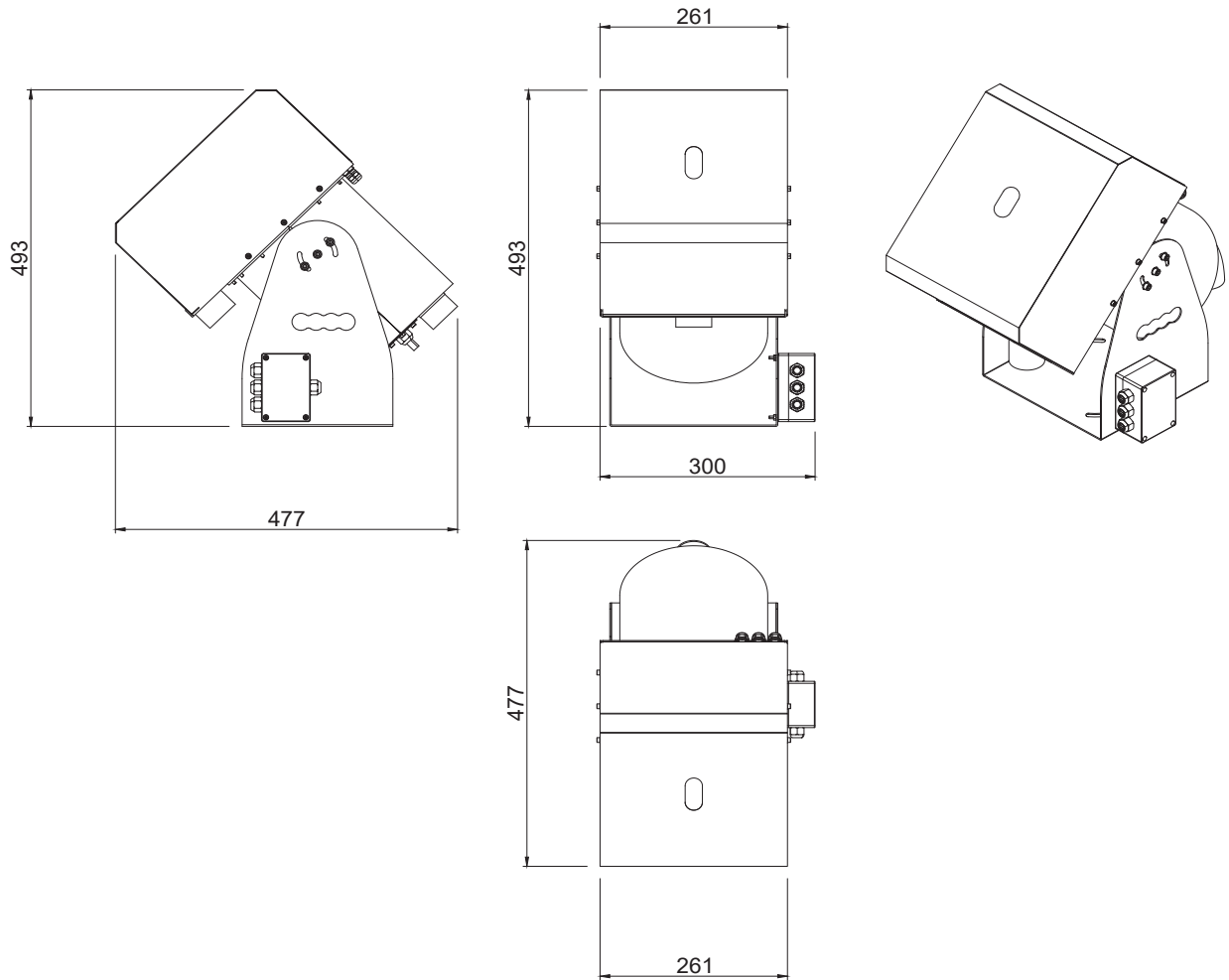
Ph • +617 5597 5882

E • [info@techno-waterdesigns.com.au](mailto:info@techno-waterdesigns.com.au)

W • [www.techno-waterdesigns.com.au](http://www.techno-waterdesigns.com.au)

Issued in November 2021

# TWD - Laminar 18mm Comet Jet



**Power Consumption for Lights**  
 RGBW - 9.5W  
**Power Consumption for Cutting Mechanism**  
 30W  
**Voltage**  
 24VDC  
**Nozzle Orifice**  
 18mm  
**Water Inlet**  
 1.1 1/2"  
**Max. Water Level**  
 300mm (for Wet Application)  
**Protection**  
 IP68  
**Control Protocol**  
 DMX512  
**No. of Channels**  
 8  
**Material**  
 Stainless Steel 304 or 316  
**Optional**  
 Submersible Application Kit  
 Receiving Light Kit  
 Flow Stabiliser Kit

## TRAJECTORY PROJECTILE OF WATER JET

